

ARC PROJECT

REFERANCE CATALOUGE



Your Solution Partner In The Process..



Central : Fevzipasa Mah. T.C.B. Blv. No: 278/A
Seyhan/ADANA - TURKEY

PHONE : + 90 322 456 23 69

FAX : + 90 322 456 23 75

WEB : www.arcsuaritma.com

EMAIL : info@arcsuaritma.com

İzmir District Office : 9 Eylül Mah. 7237
Sokak A2 Blok No: 2/3 İç kapı No: 5
Menemen /İZMİR

İstanbul Office :Atatürk mahallesi
Ataşehir bulvarı Metropol Residence A2
Blok Kat 31 Daire 450 Ataşehir /
İstanbul

Antalya District Office: Ayanoğlu Mah.
Süleyman Demirel Bul. No:251/
Kepez/ ANTALYA

MAIN FIELDS OF ACTIVITY

- **STEEL INDUSTRY (MELTING SHOP, ROLLING MILL)**
- **SEA WATER TREATMENT PLANTS**
- **POWER PLANTS**
- **OIL & GAS PLANTS**
- **PETRO-CHEMISTRY**
- **GREENHOUSE**
- **FOOD & BEVERAGE INDUSTRY**
- **TEXTILE**
- **INSTITUTION MARKET**



ARC WATER
TECHNOLOGIES

COMPANY PROFILE

ARC WATER TREATMENT TECHNOLOGIES LTD. CO.

ARC serves the industry in the field of industrial water treatment since 2005. The head office is located in Adana and also has a branch office in İstanbul , İzmir and Antalya.

ARC gives service, product and project solutions to other companies that has a role in water treatment field all over the Turkey.

FIELD OFACTIVITY

ARC WATER TREATMENT TECHNOLOGIES LTD. CO.

ARC has begun to activities about industrial water treatment, water conditioning, water cooling and water recovering systems since 2005.

The Company creates turn-key design projects and doing required activities about process water treatment, waste water treatment and recovery and water facilities design in Turkey and abroad.



SOME REFERANCES



İZMİR DEMİR ÇELİK
SANAYİ A.Ş.



TOSÇELİK
PROFİL VE SAC ENDÜSTRİSİ A.Ş.



KHALID ALIAL-KHRAFI
& BROS Co.

SOME REFERANCES



SOME REFERANCES



SOME REFERANCES



SOME REFERANCES



MegaMetal™



SOME REFERANCES



TOYOTA



aves

ÇİMSA

APRO

SOME REFERANCES



AL-KHRAFI WTPE FACILITY



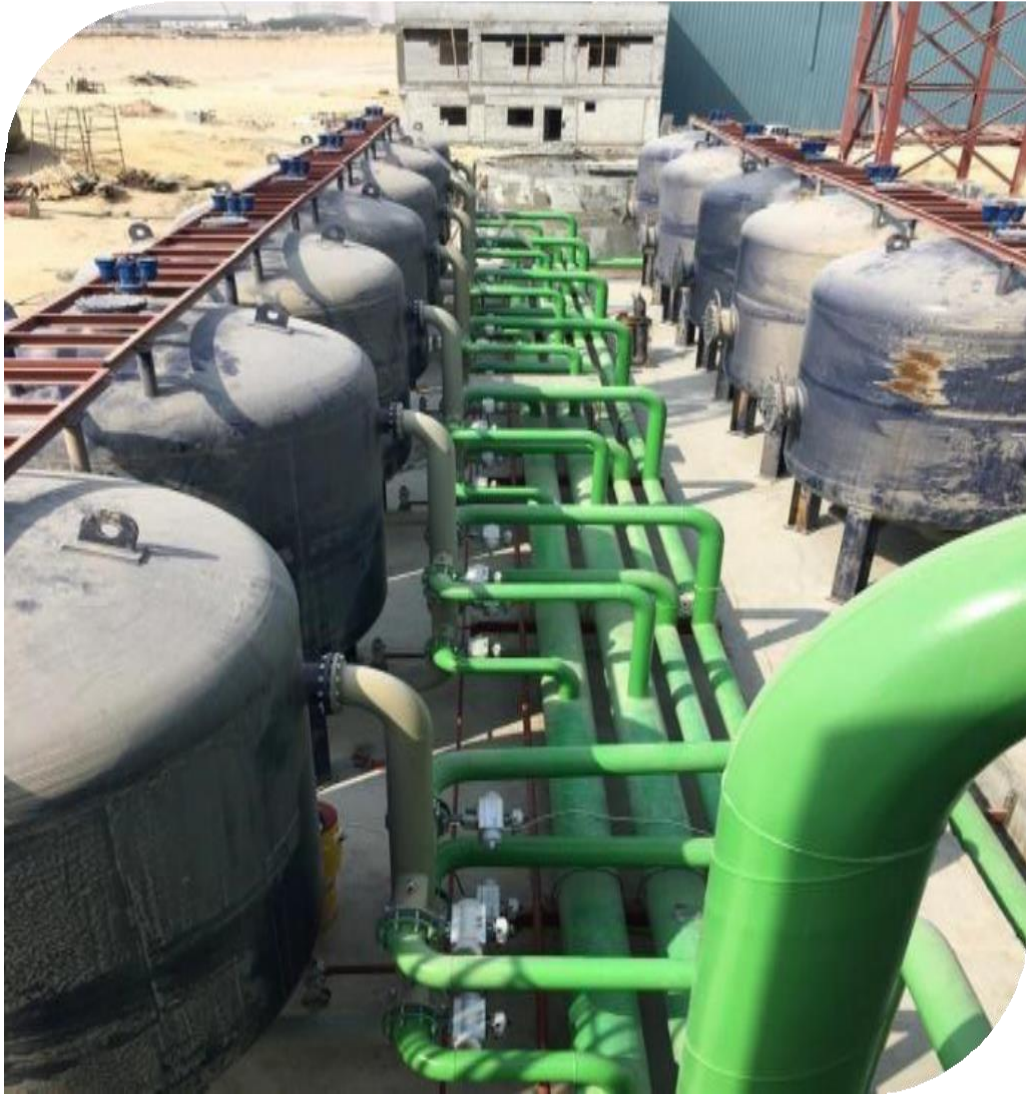
- **Indirect Cooling** : 310 m³/h – 6 bar
- **Direct Cooling**
 - **RM Direct Cooling** : 500 m³/h – 6 bar
 - **Thermoprocessing** : 500 m³/h – 6 bar
- **Scale Pit** : 600 m³/h
- **Thickener** : Q = 7 m
- **Horizontal Sedimentation Tank**
- **Pump Station**
- **Filter Press**
- **Sand Filter** : Q = 3500 mm x 12 unit
- **Make-up System** : 100 m³/h
 - **Sand Filter Dimension** : Q = 2500 mm
 - **Carbon Filter Dimension** : Q = 2500 mm
 - **Reverse Osmosis Unit 1** : 90 m³/h
 - **Reverse Osmosis Unit 2** : 15 m³/h
 - **Heat Exchanger**
 - **Mechanical Filter**
- **Electrical & Automation**



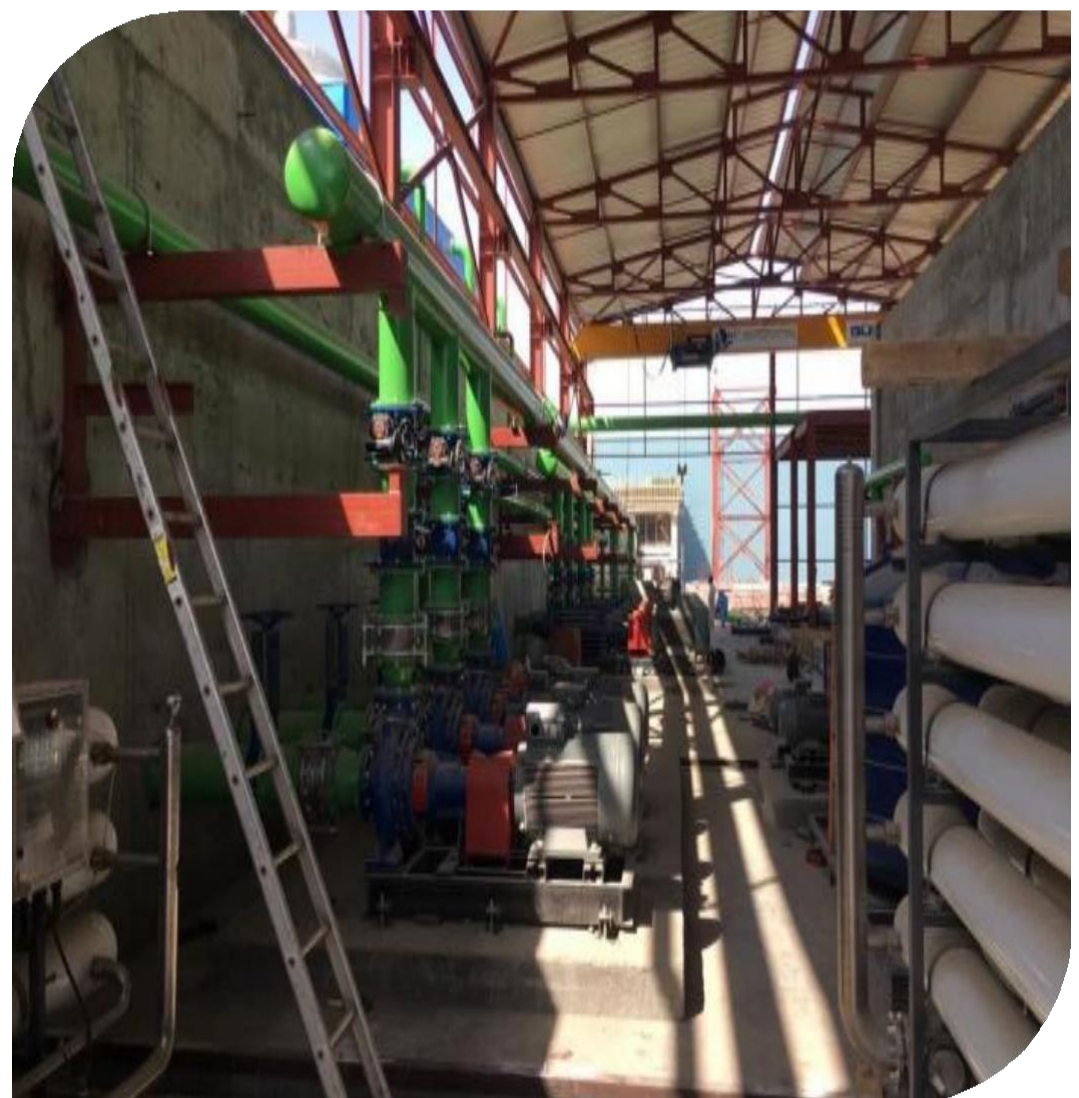
COOLING TOWER



SCALE PIT SEDIMENTATION TANK THICKENER



TUFAL (SAND) FILTER



MAKE – UPSYSTEM



SASA
POLYESTER SAN. A.Ş.

TURKEY'S LARGEST DEMINERALIZATION FACILITY



- **Mechanical Filter Unit** : 400m³/h x 2 unit
TOTAL: 800 m³/h & 19200 m³/day
- **Ultrafiltration Unit** : 191m³/h x 3 unit
TOTAL: 573 m³/h & 13752 m³/day
- **Reverse Osmosis System** :149 m³/h x 3 unit
TOTAL 447 m³/h & 10728 m³/day
- **Reverse Osmosis System** : 95 m³/h x 3 unit
TOTAL 285 m³/h & 6840 m³/day
- **Electrodeionization System** : 90 m³/h x 2 unit
TOTAL: 180 m³/h & 4320 m³/day
- **Electrical & Automation**



ULTRAFILTRATION UNIT



ARC BIA 13880 REVERSE OSMOSIS SYSTEM

ARC BIA9680 REVERSE OSMOSIS SYSTEM



ELECTRODEIONIZATION SYSTEM



SASA
POLYESTER SAN. A.Ş.

NITROGEN FACILITY

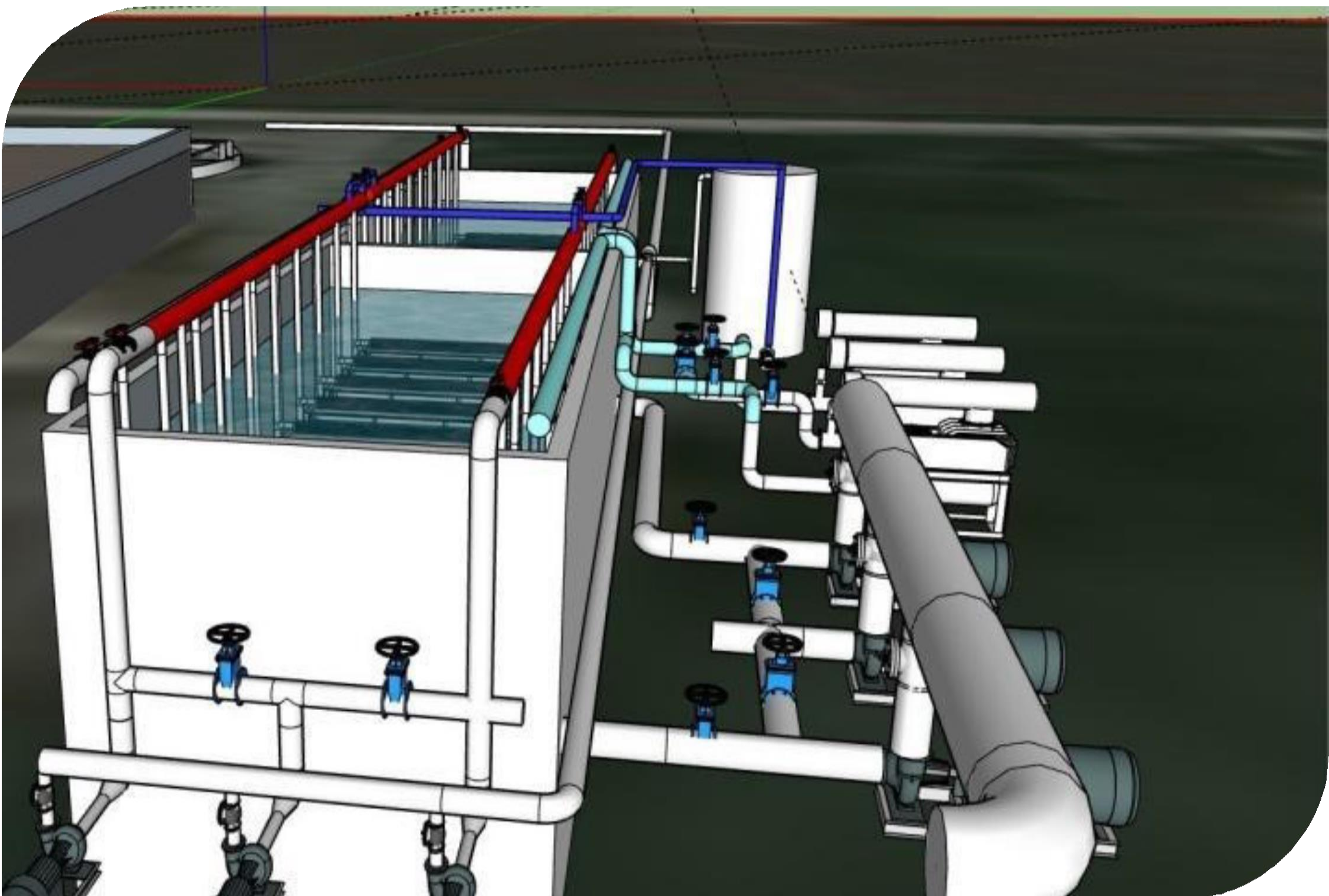




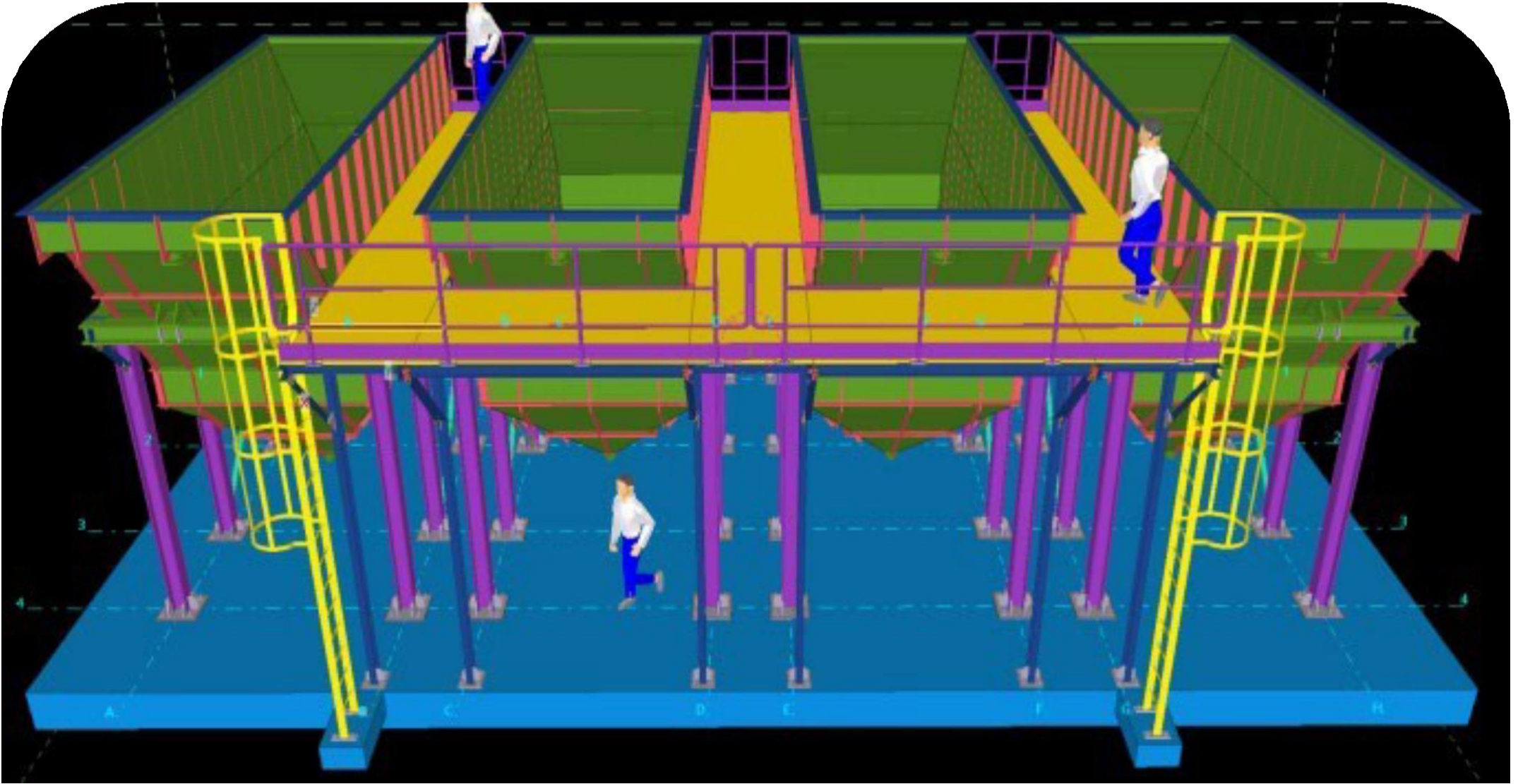
**NITROGEN PLANT
INSTALLATION & ASSEMBLY & COMMISSIONING & SUPERVISOR**



**WASTE WATER TREATMENT SYSTEM
MBR SYSTEM**



LAMELLA SYSTEM

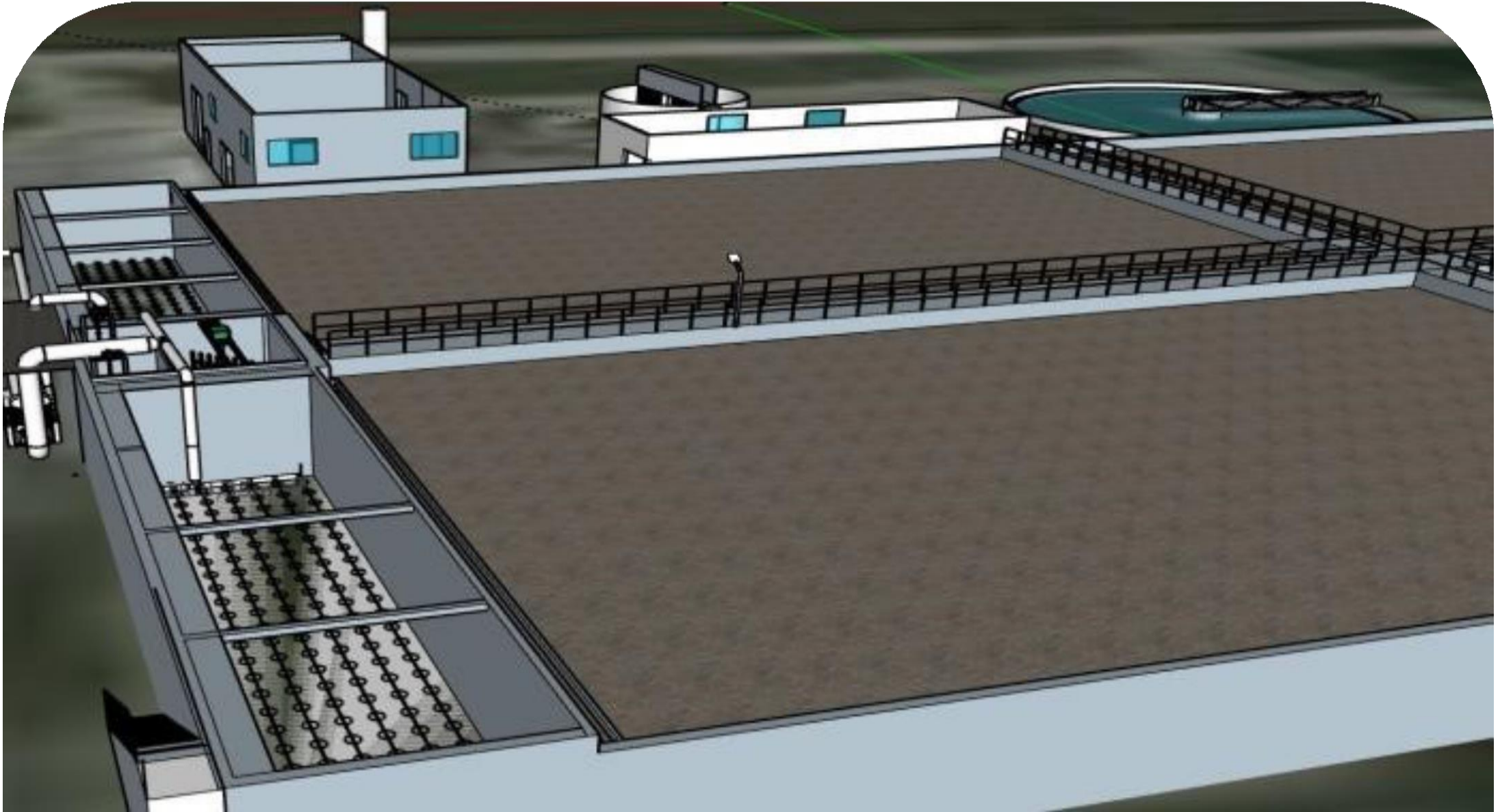


MBR TREATMENT SYSTEM

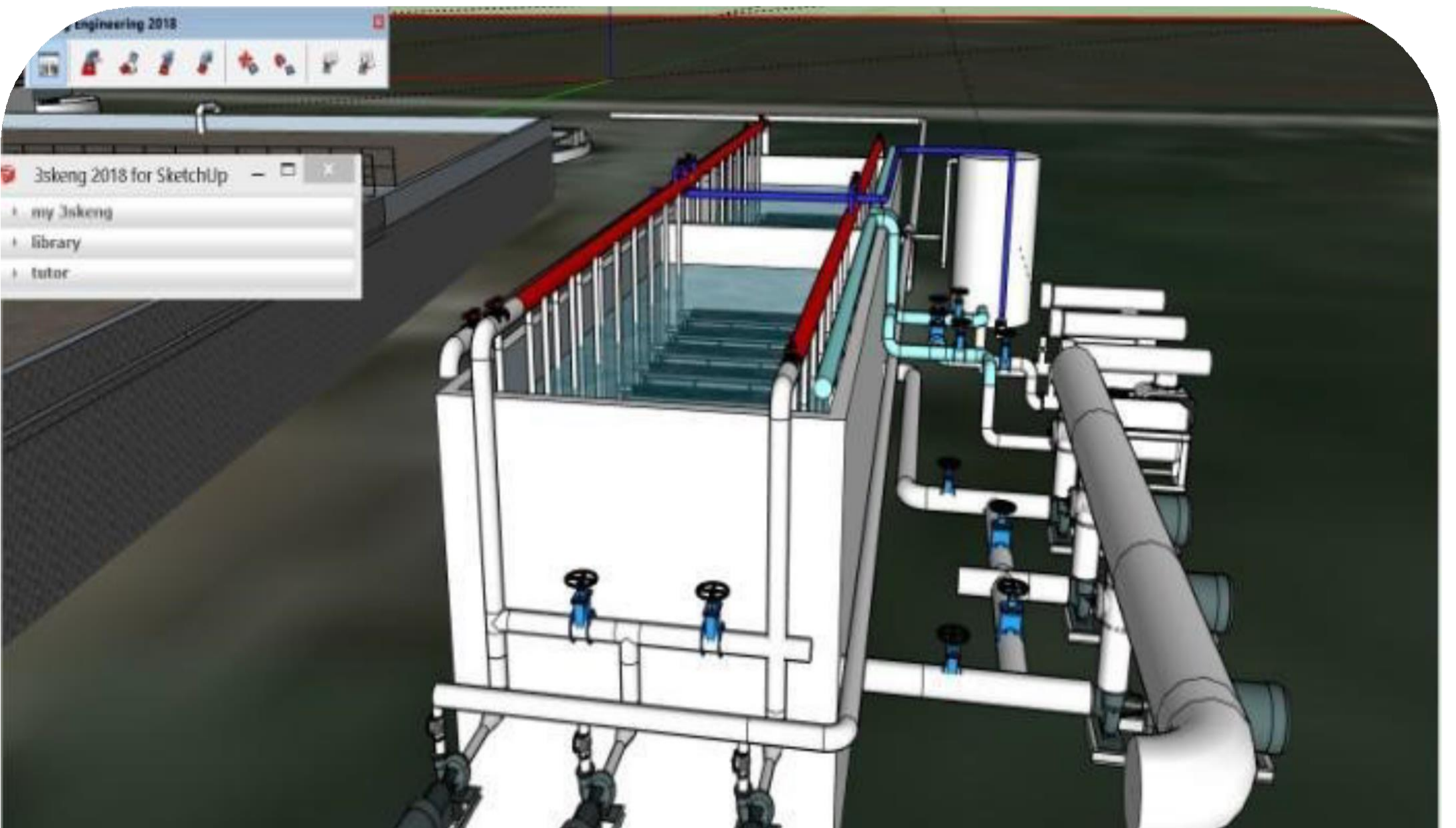
Capacity : 7.000 m³/day



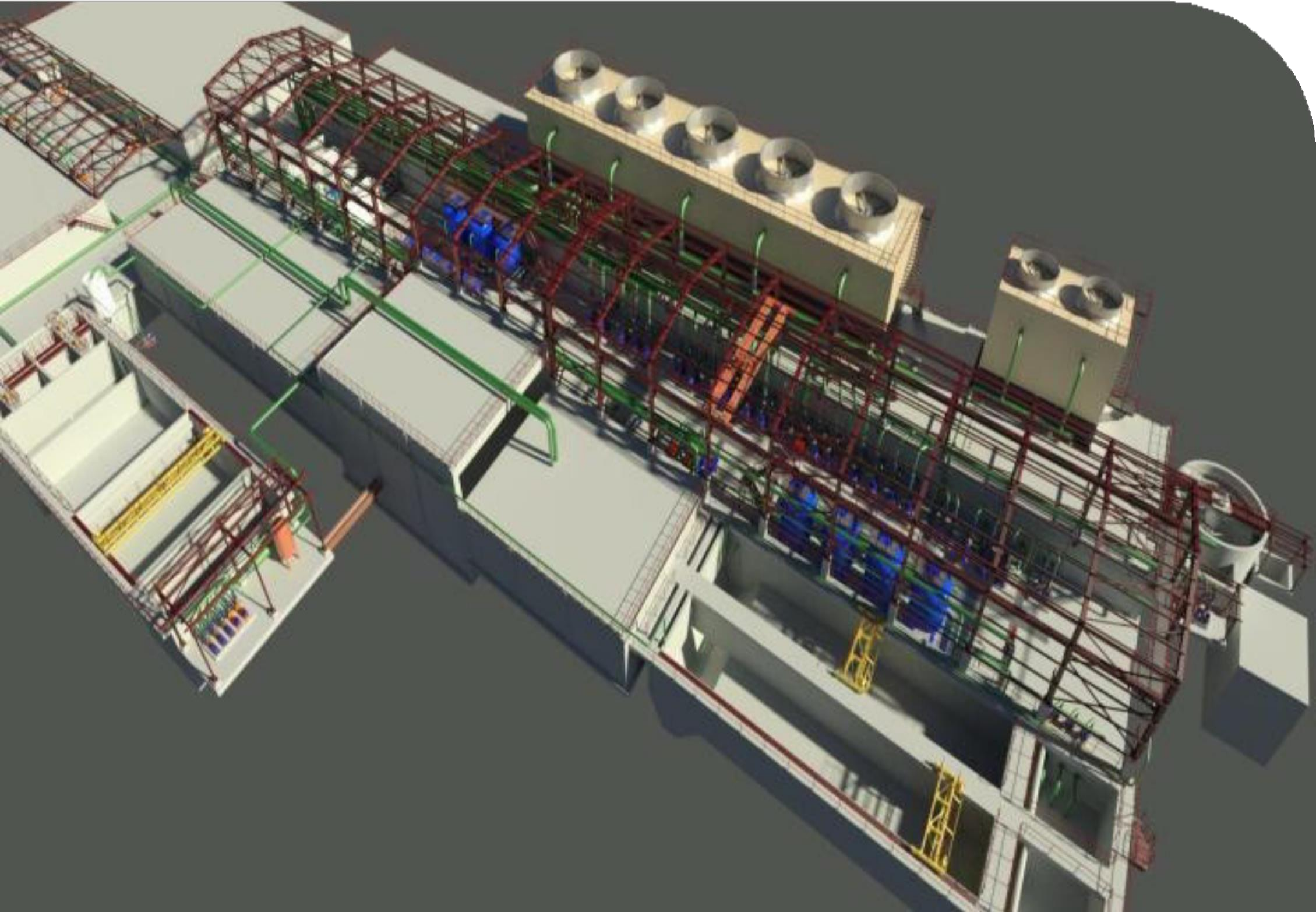
AERATION TANK



MBR (Membrane Bioreactor) SYSTEM



MELTSHOP (EAF-CCM) WTP FACILITY



- **Meltshop Indirect Cooling System**
- **CCM Direct Cooling System**
- **CCM Mould Cooling System**
- **E.M.S Cooling System**
- **Ultrafiltration Unit** : 400 m³/h
- **Reverse Osmosis Unit** : 220 m³/h
- **Activated Carbon Filter** : 500 m³/h
- **Scale Sedimentation Tank** : 900 m³/h
- **Linear Scraper** : Q 8 m
- **Thickener And Filter Pres** : Q 7 m
- **Side Stream Filters** : 450 m³/h
- **Tufal Filters** : 600 m³/h
- **Pumps Holl**
- **Electrical & Automation**



COOLING TOWER





**SEDIMENTATION TANK
THICKNER
DAF UNIT**



ULTRAFILTRATION UNIT



REVERSE OSMOSIS UNIT



SIDE STREAM FILTER

TUFAL FILTER



PUMPS STATION





**TOSYALI
TOYO**

Çelik

REVERSE OSMOSIS PLANT



- **Mechanical Filter Unit** : 250 m³/h x 1 unit
- **Ultrafiltration Unit** : 140 m³/h x 1 unit
TOTAL : 140 m³/h & 3360 m³/day
- **Pass1 Reverse Osmosis** : 60 m³/h x 2 unit
TOTAL 120 m³/h & 2880 m³/day
- **Pass2 Reverse Osmosis** : 48 m³/h x 2 unit
TOTAL 96 m³/h & 2304 m³/day
- **Sand Filter** : 80m³/h x 1 unit
TOTAL 80 m³/h & 1920 m³/day
- **Softening System** : 80m³/h x 1 unit
TOTAL 80 m³/h & 1920 m³/day

MECHANICAL FILTER





ARC BIA 6080 REVERSE OSMOSIS & ARC BIA 3680 REVERSE OSMOSIS





REVERSE OSMOSIS PLANT





REVERSE OSMOSIS PLANT

Capacity : 2 x 40 m³/h



AVŞA ISLAND SEA WATER TREATMENT PLANT





SEAWATER DESALINATION PLANT

Capacity : 4500 m³/day





GAS CHLORINE SYSTEM





ASLANTAS DISINFECTION UNIT
5.000 m³/h Gas Chlorine Dosage Facility





YOLBULAN WTP FACILITY



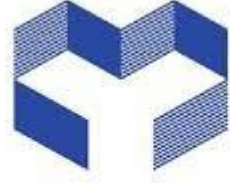
- 
- **Sand Filter Unit** : **1.300 m³/h**
 - **Side Stream Filtration Unit** : **600 m³/h**
 - **Reverse Osmosis Unit** : **200 m³/h**

CCM DIRECT COOLING CIRCUIT & SAND FILTER UNIT



MAKE-UP TREATMENT REVERSE OSMOSIS UNIT





YAZICI DEMİR ÇELİK



- **Lamella Unit** : **2.880 m³/day**
- **Mechanical Filter**
- **Ultrafiltration Unit** : **2.880m³/day**
- **Reverse Osmosis Unit** : **1.920 m³/day**
- **Pumps Station**
- **Modular Water Tank** : **SS304 / Galvanized**
- **Electrical & Automation**

LAMELLA SYSTEM



ULTRAFILTRATION SYSTEM





REVERSE OSMOSIS UNIT



aves

WWTPPLANT





PROJECT - PIPING-EQUIPMENT PRODUCTION - COMMISSIONING

Waste Water Treatment Plant : 1.000 m³/day





TOSYALI
HOLDING

TOSÇELİK ERW FACILITY





Sand Filter Unit : 720 m³/day
Reverse Osmosis Unit : 300 m³/day

Softener System : 720 m³/day
SS304 Modular Water Tank





TOSYALI
HOLDING

TOSÇELİK ÇELİKHANE FACILITY





**ROLLING MILL LAMINER COOLING MODERNIZATION OF
SAND FILTERS : 2.500 m³/h**





WATER TECHNOLOGIES

SOFTENER UNITS : 2x120 m³/h



REVERSE OSMOSIS UNIT : 560 m³/day





HABAŞ STEEL PLANT FACILITY





RM DIRECT COOLING CIRCUIT

15.700 m³/h FILTRATION SYSTEMS





THICKENER Q20000

SEDIMENTATION Q10000*50000

CHEMICAL DOSING UNITS AND CHEMICAL TREATMENT





MAKE-UP RAW WATER TREATMENT PLANT

RO + PRETREATMENT : 100 m³/h



SOFTENER SYSTEM : 700 m³/h



PROJECT ENGINEERING AND SUPERVISION



KOÇ ÇELİK STEEL PLANT FACILITY





WATER TECHNOLOGIES

CCM DIRECT COOLING CIRCUIT

560 m³/h FILTRATION SYSTEM



MAKE-UP REVERSE OSMOSIS SYSTEM Capacity: 120 m³/h





MAKE-UP REVERSE OSMOSIS SYSTEM

Capacity: 120 m³/h





KAPTAN PLANT FACILITY





Capacity : 480 m³/day
REUSE OF WASTE WATER



ETİ KROM PLANT FACILITY



DEMINERALIZE PLANT





NEUTRALISATION SYSTEM



YEŞİLYURT STEEL PLANT FACILITY





MAKE-UP WATER PREPARATION UNIT
RO + PRETREATMENT Capacity : 200 m³/h





CCM DIRECT COOLING CIRCUIT 500 m³/h

SIDESTREAM FILTRATION SYSTEM 500 m³ / h



SUMITOMO RUBBER AKO WTP PLANT



WATER TREATMENT SYSTEM

Capacity : 40 m³/h





TKİ WTPPLANT



LAMELLA SYSTEM Capacity: 300 m³/h



SAND FILTER Capacity: 300 m³/h





MAKE - UPSYSTEM



MARZINC WTPPLANT





CAPACITY: 1500 m³/day
LAMELLA SYSTEM



FNT & MNNA STEELCO.

FNT&MNNA STEEL WTP PLANT





CLOSED CIRCUIT COOLING SYSTEM
CAPACITY : 960 m³/day





İZMİR DEMİR ÇELİK

SAND FILTER

**144m³/h 9 pieces Sand Filter
SYSTEM CAPACITY : 1300 m³/h**





AKKUYU NUCLEAR POWER PLANT

2x200 m³/d PACKAGE TREATMENT SYSTEM – 3 SET





Container Type Reverse Osmosis System

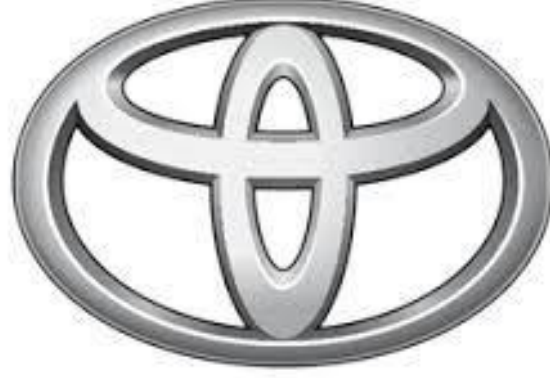




TOGLIATTIAZOT - RUSSIA

DEIONIZED SYSTEM





TOYOTA

ELECTRODEIONIZATION SYSTEM

SYSTEM CAPACITY : 40m³/h





UF & RO & BORON REMOVAL SYSTEMS

SYSTEM CAPACITY : 360 m³/day





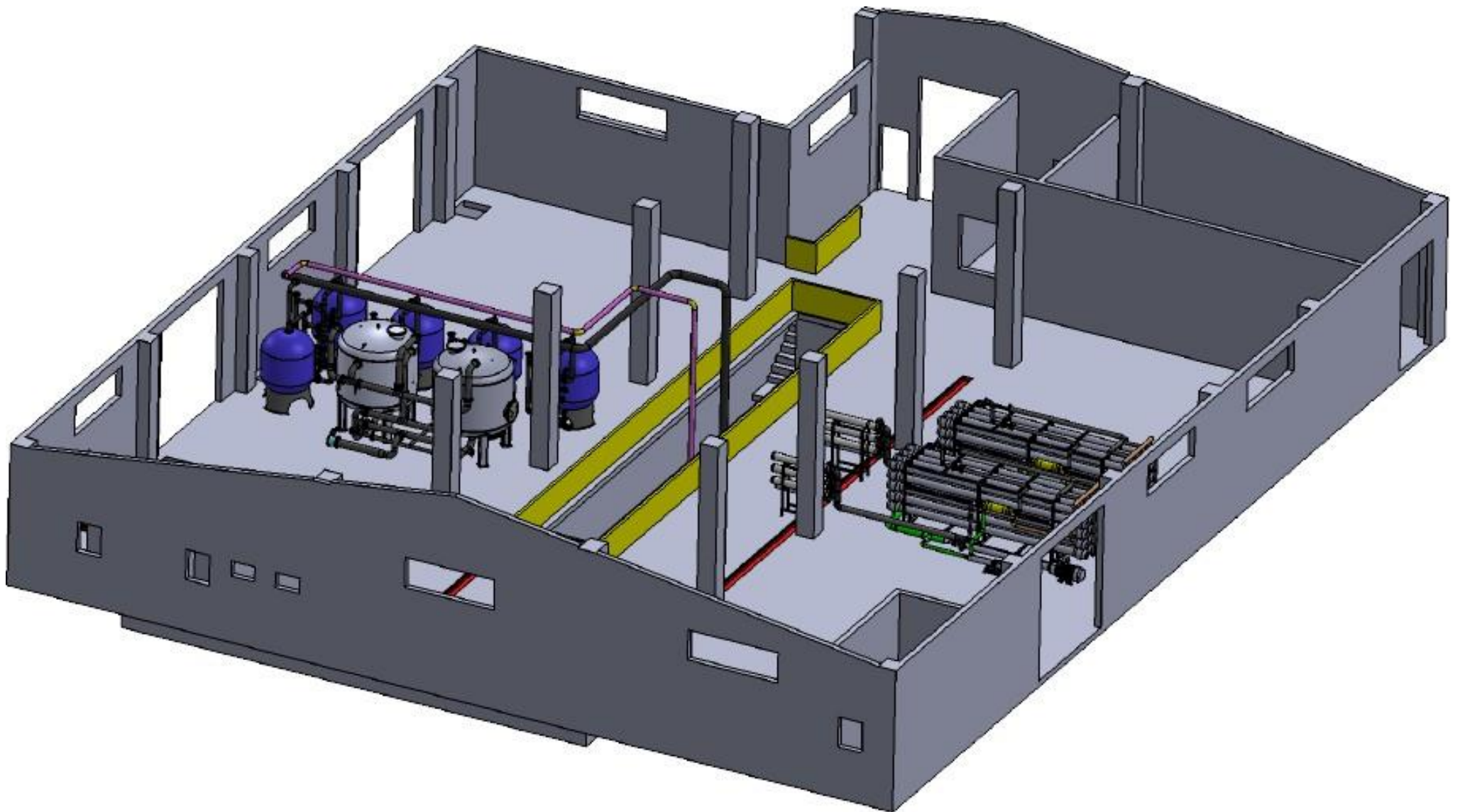
REVERSE OSMOSIS SYSTEM

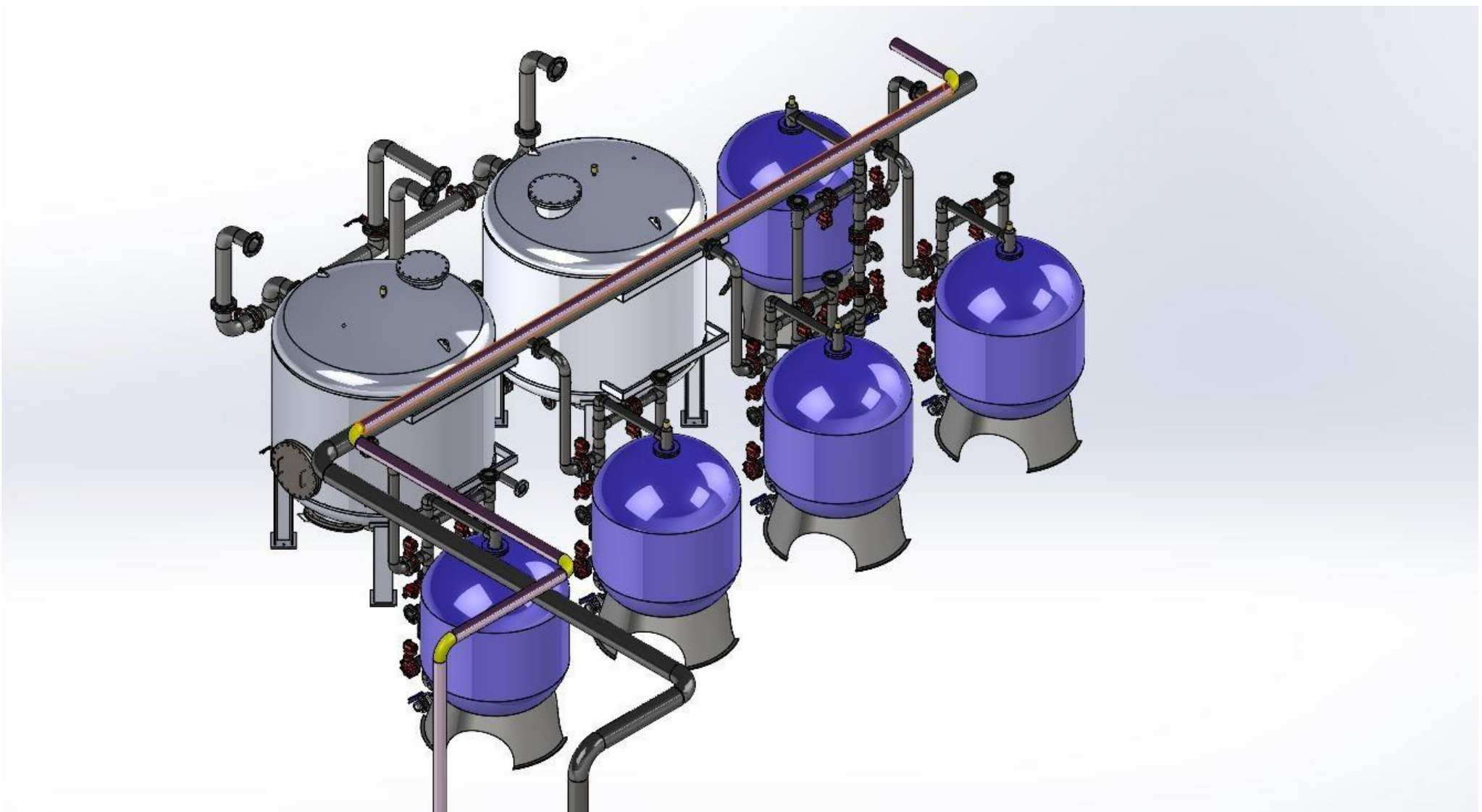
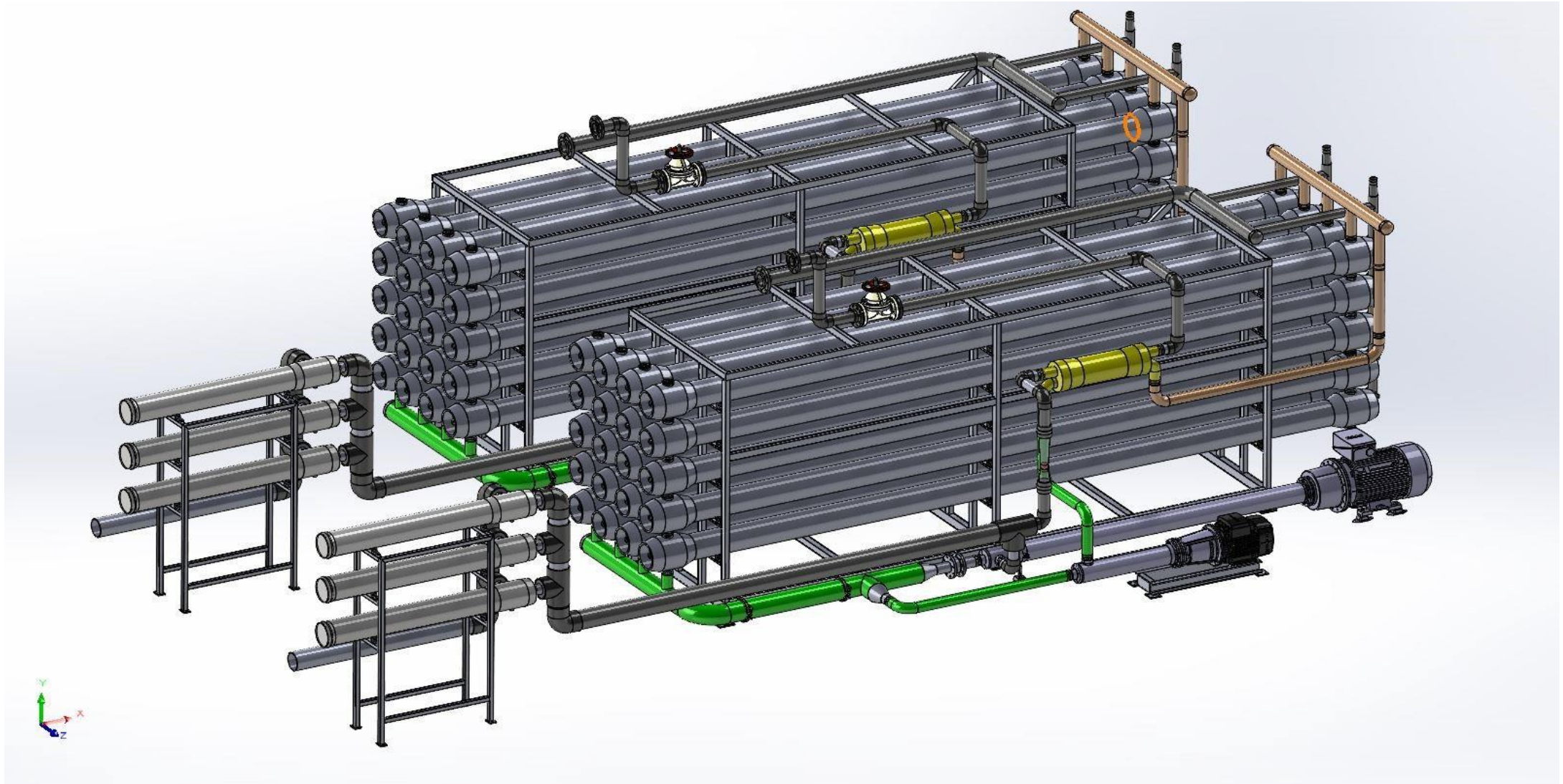
SYSTEM CAPACITY : 1.000 m³/day



AVŞA ISLAND SEA WATER TREATMENT SYSTEM

System Capacity : 2700 m³/day





HIDDENBAY
— T E O S —

SEA WATER RO, BRACKISH WATER RO, BORON REMOVAL SYSTEM

SYSTEM CAPACITY : 1,500 m³/day



HIDDENBAY
— T E O S —

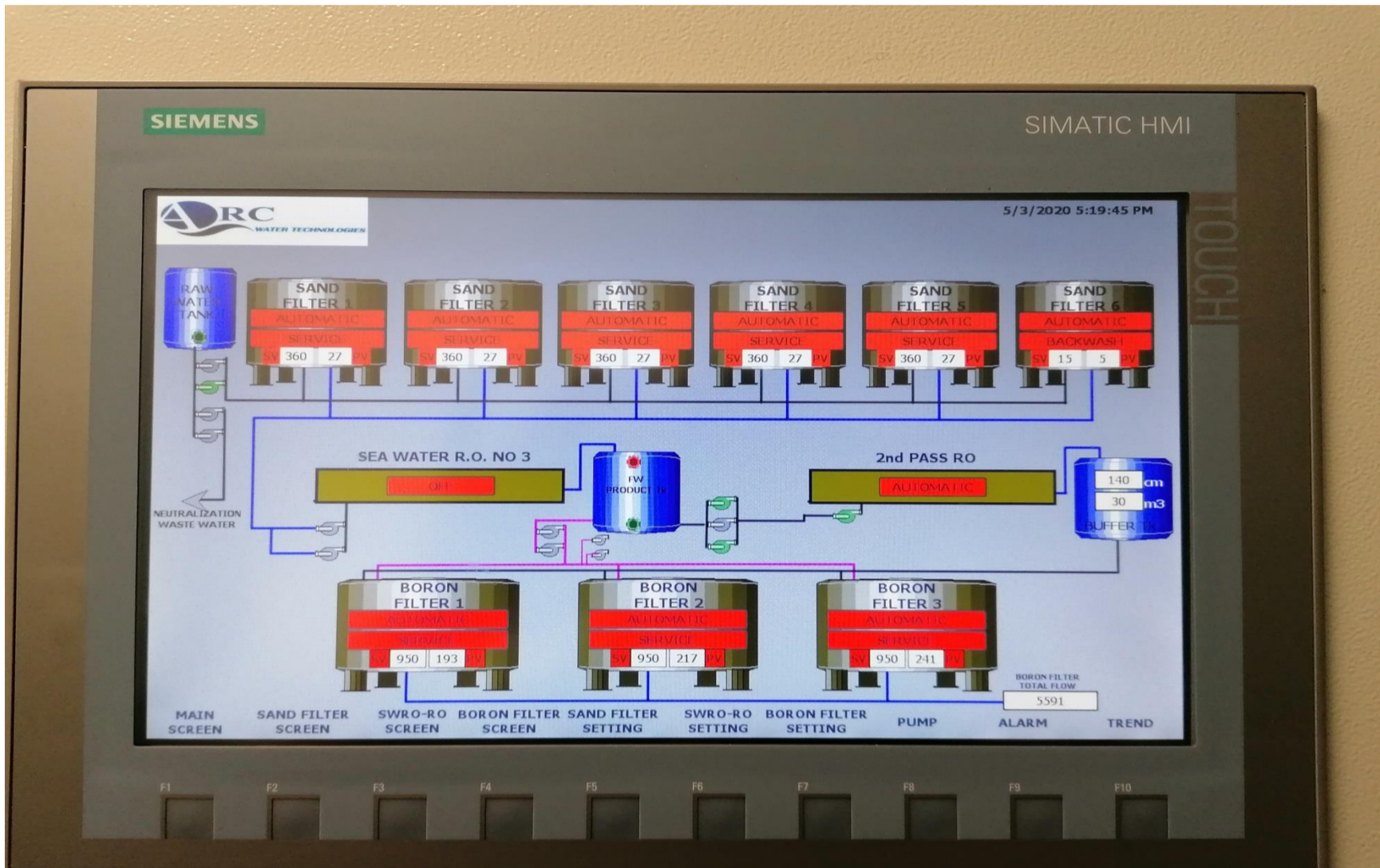


HIDDENBAY
— T E O S —



HIDDENBAY

— T E O S —

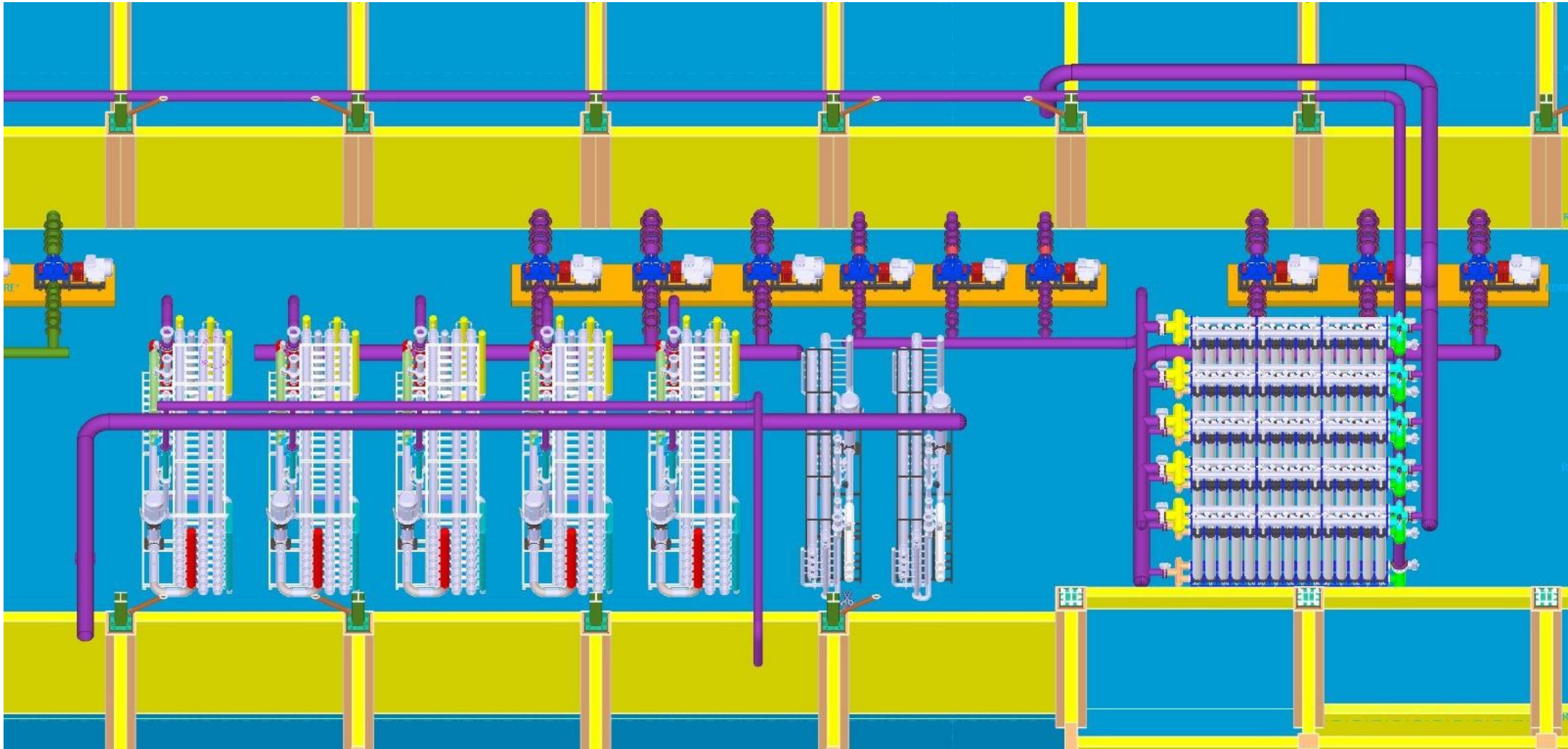


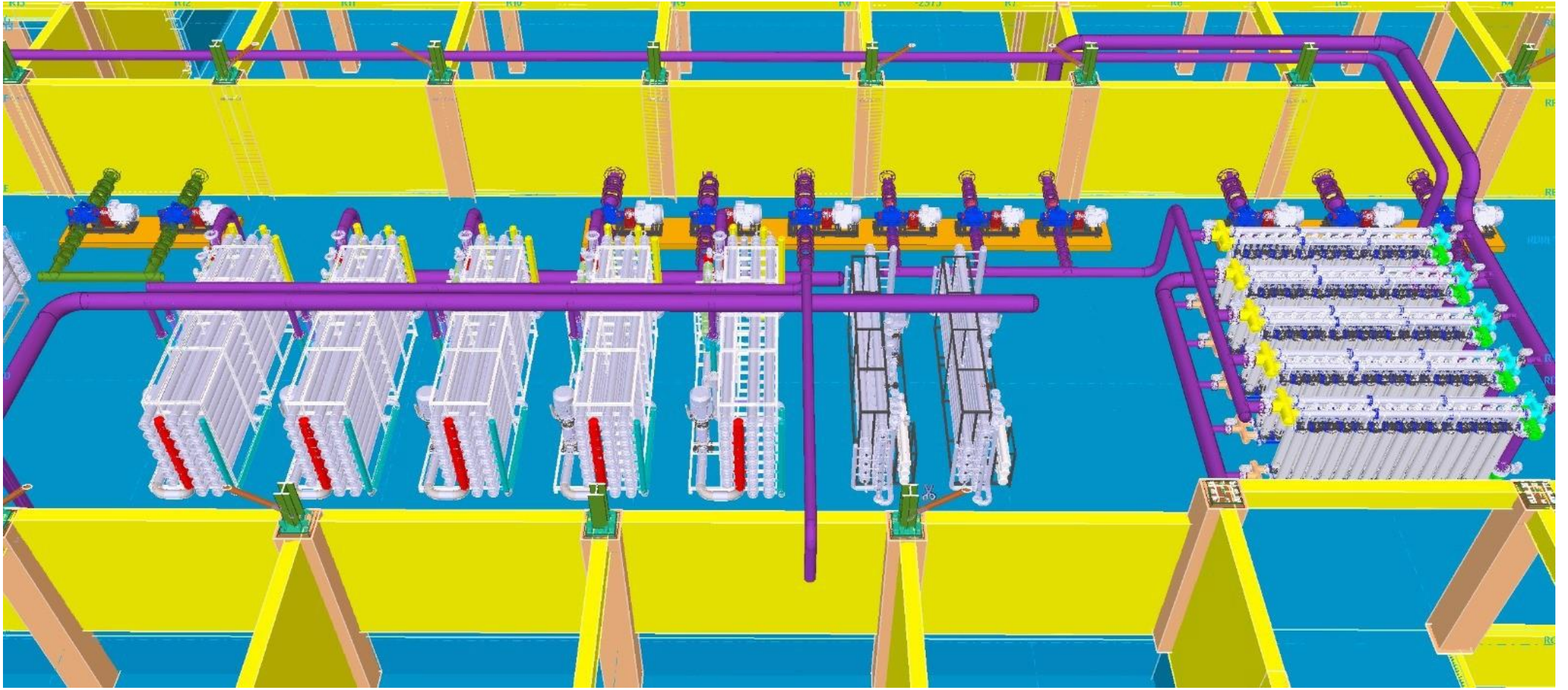
On-Going Project



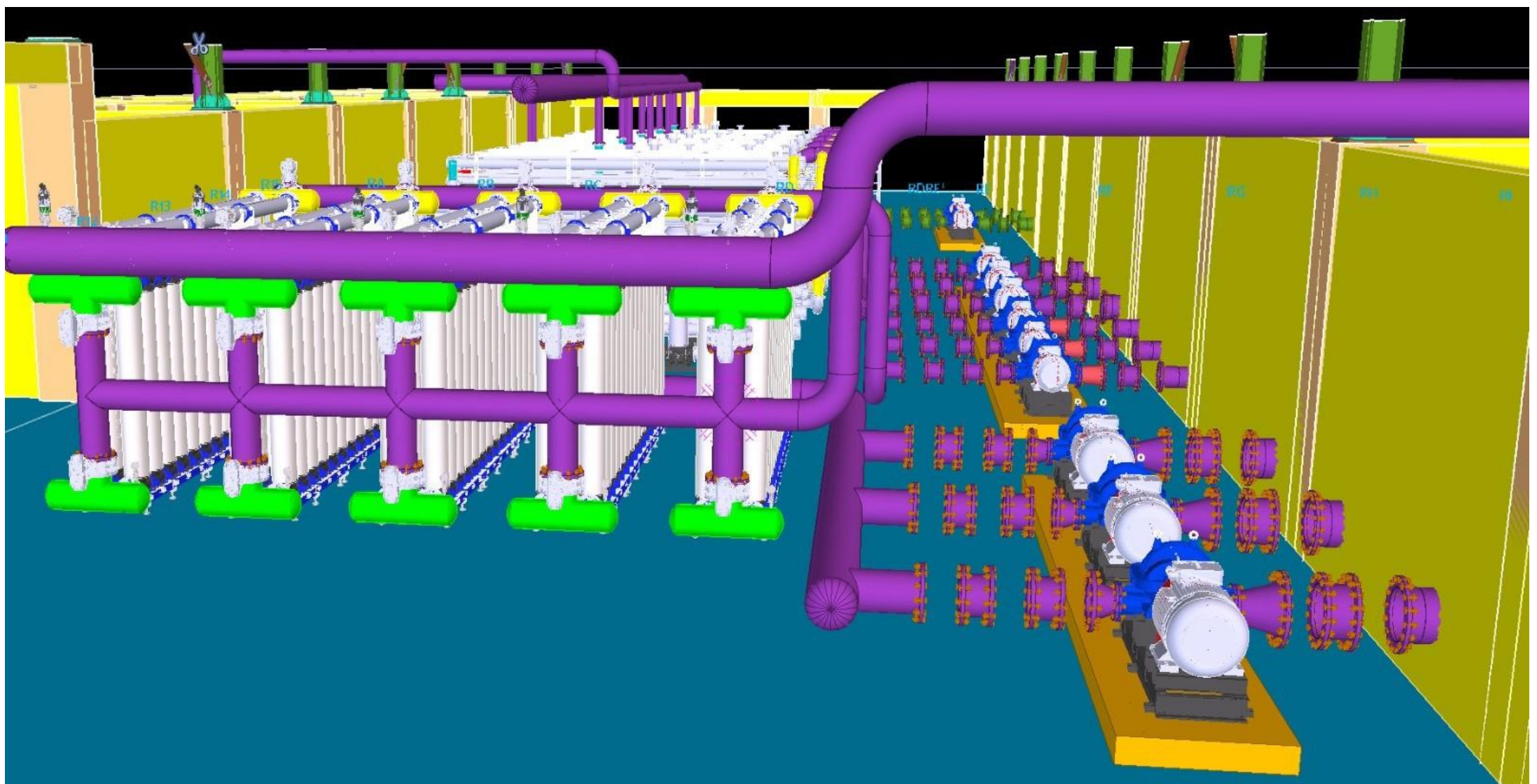
WATER FACILITIES PROJECT

System Capacity : 1000 m³/h





ULTRAFILTRATION SYSTEM
REVERSE OSMOSIS SYSTEM





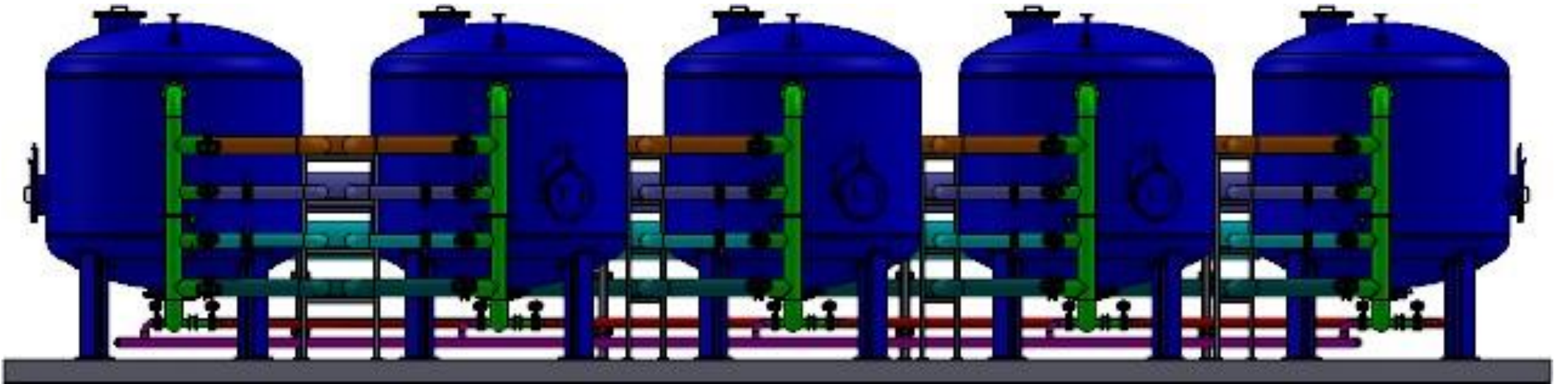


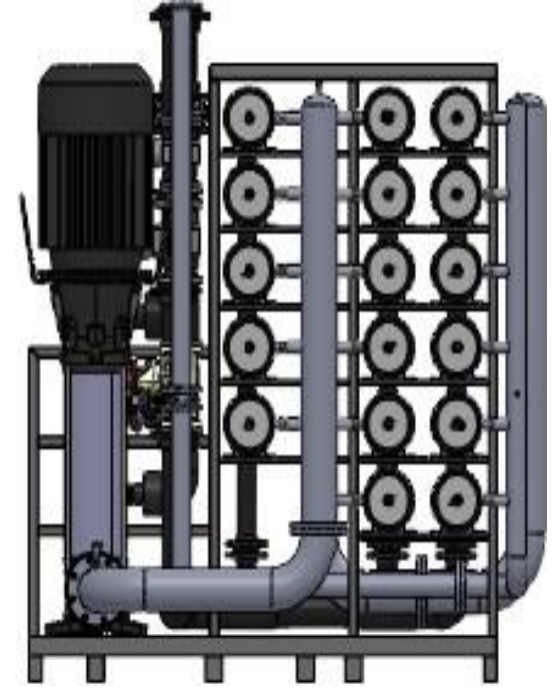
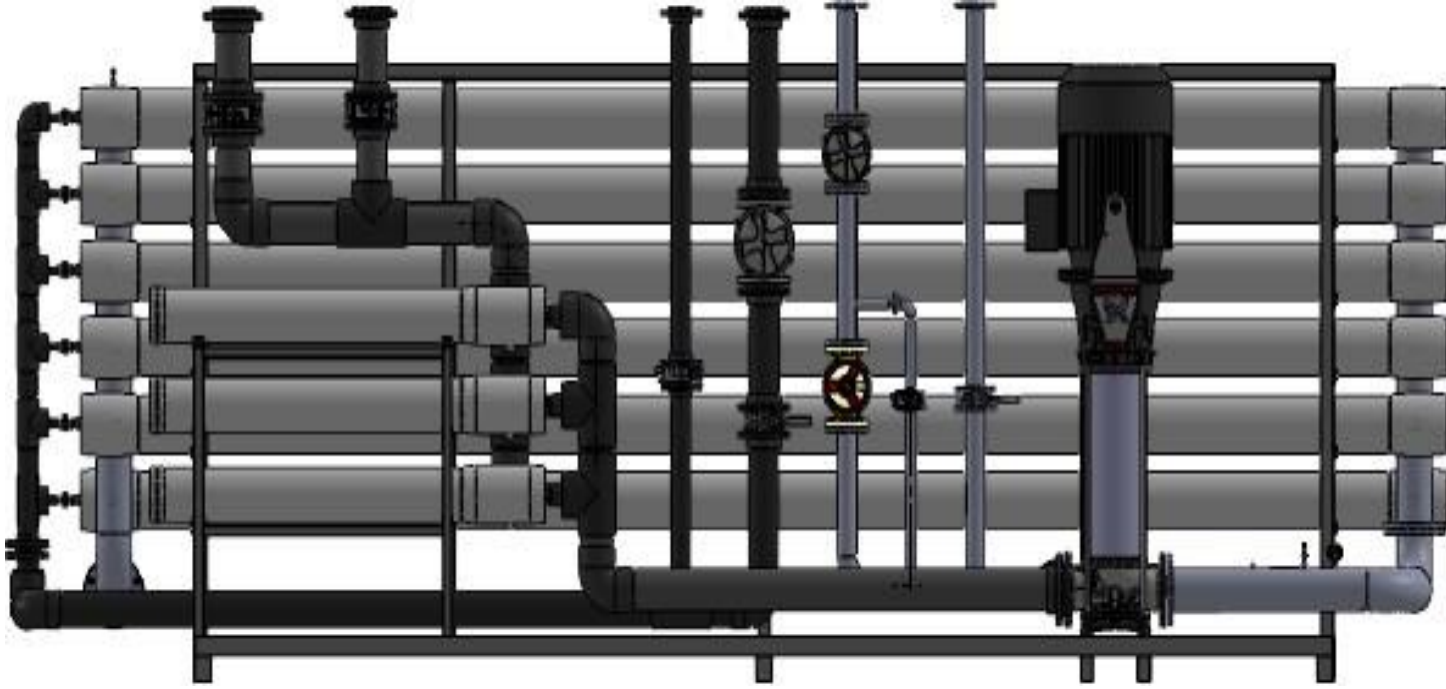
On-Going Project



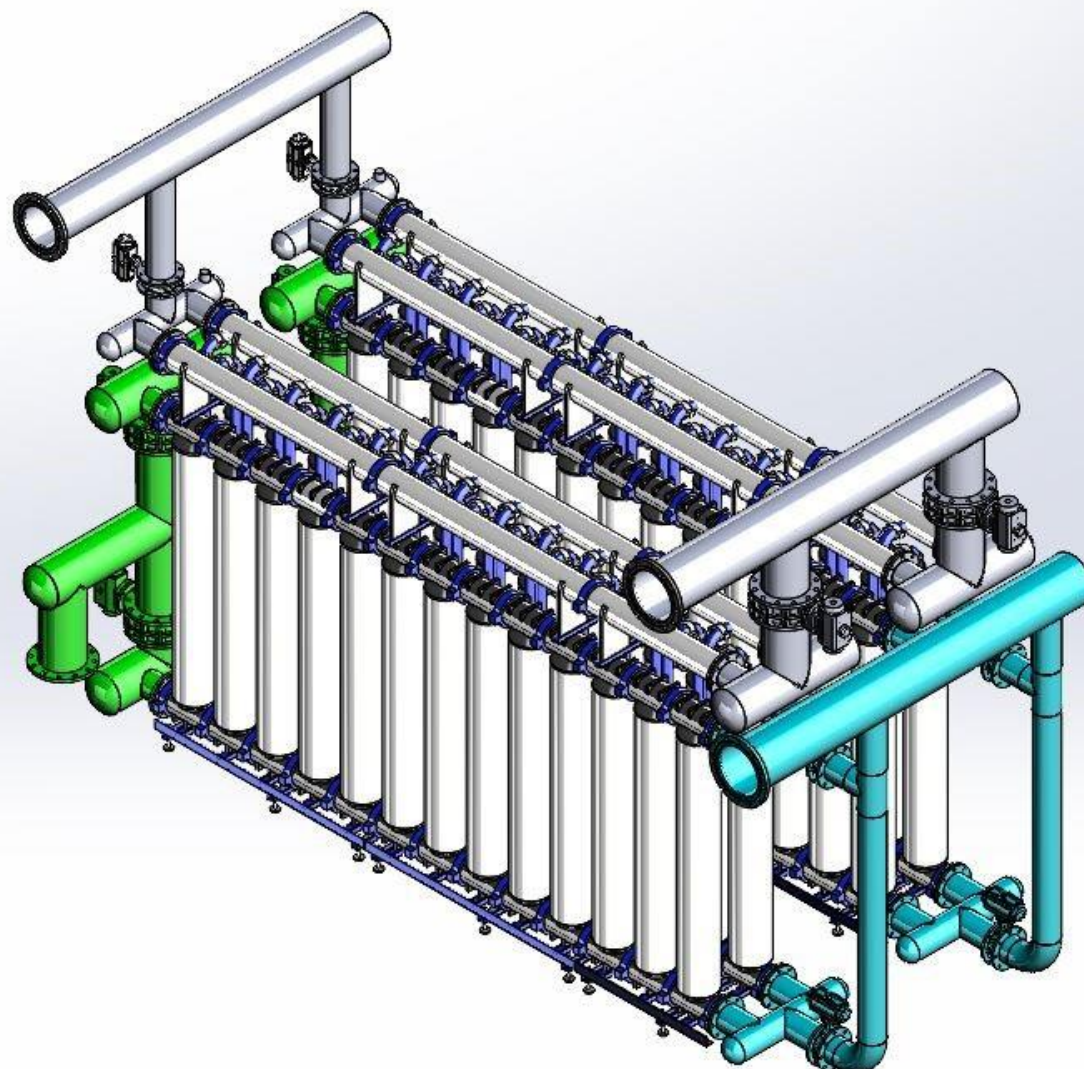
WATER FACILITIES PROJECT

System Capacity : 200 m³/h





ULTRAFILTRATION SYSTEM
REVERSE OSMOSIS SYSTEM
FILTRATION SYSTEM





ON – GOING PROJECT / 2022	
CLASSIC FASHION WASTEWATER RECOVERY SYSTEM	Waste Water Treatment System / Ultrafiltration Unit / Reverse osmosis system
SINOSTEEL	Lamella clarificiation system
İZMİR DEMİR ÇELİK	Water Treatment Plant and Circulation system of Steel Making Plant-Turnkey Project.
İZMİR DEMİR ÇELİK	Sea Water Treatment System
İÇDAŞ	Water Treatment Plant and Circulation system of Steel Making Plant-Turnkey Project.
YEŞİLYURT DEMİR ÇELİK	Water Treatment Plant and Circulation system of Steel Making Plant-Turnkey Project.
AKSA	WTP Plant

ON – GOING PROJECT / 2022	
SASA POLYESTER A.Ş./DEMIN WATER SYSTEM	Ultrafiltration Unit /Activated Carbon Reverse osmosis system / H/OH Filter System/ Electrical and Automation
SASA POLYESTER A.Ş. / SIDE STREAM SYSTEM	Lamella clarificiation system
DÜŞLER VADİSİ	Water Treatment Plant and Circulation system of Steel Making Plant-Turnkey Project.
SASA POLYESTER A.Ş. / POTABLE WATER SYSTEM	Sea Water Treatment System
EKİCİLER DEMİR ÇELİK	Water Treatment Plant and Circulation system of Steel Making Plant-Turnkey Project.



THANK YOU FOR YOUR ATTENTION...
ARC PROJECT DEPARTMENT